

# Dual Wavelength Waveplate

## Features

- High Precision Dimension Control
- High Retardation Tolerance
- Optional Wavelength

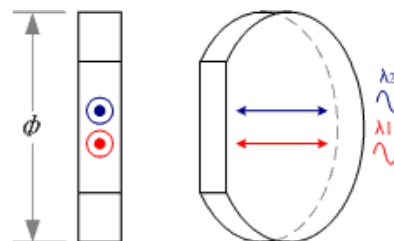
## Applications

- Projector
- DVD, CD, Camera
- Tunable Laser
- Optical Measurement System

## Specifications

Waveplate

Material	Crystal quartz
Dimension tolerance	+0.0/-0.2mm
Parallelism	1 arcsec
Surface quality	20-10 S/D
Retardation tolerance	$\lambda/100$
Wavefront distortion	$\lambda/8@632.8\text{nm}$
Clear aperture	>90%
Coating	<0.2%@fundamental wavelength <0.5%@SHG wavelength



## Standard Products

Part No.	$\varnothing$ (mm)	Wavelength & Retardation	
		Wavelength	Retardation
HWPD010	10.0	1064nm: $\lambda$	532nm: $\lambda/2$
HWPD012	12.7	1064nm: $\lambda$	532nm: $\lambda/2$
HWPD015	15.0	1064nm: $\lambda$	532nm: $\lambda/2$
HWPD020	20.0	1064nm: $\lambda$	532nm: $\lambda/2$
HWPD025	25.4	1064nm: $\lambda$	532nm: $\lambda/2$
HWPD010	10.0	532nm: $\lambda/2$	1064nm: $\lambda$
HWPD012	12.7	532nm: $\lambda/2$	1064nm: $\lambda$
HWPD015	15.0	532nm: $\lambda/2$	1064nm: $\lambda$
HWPD020	20.0	532nm: $\lambda/2$	1064nm: $\lambda$
HWPD025	25.4	532nm: $\lambda/2$	1064nm: $\lambda$