

# Glan Thompson Polarizer

## Features

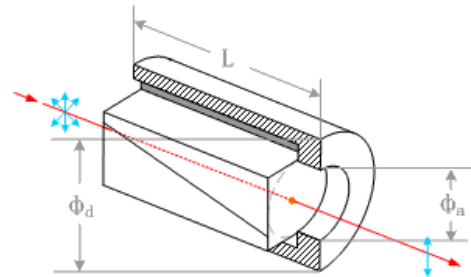
- High Polarization Purity
- Large Acceptance Angle
- Low Power Application

## Applications

- Beam Polarizing

## Specifications

Material	Calcite
Wavelength range	350~2300nm
Extinction ratio	$< 5 \times 10^{-5}$
Surface quality	60-40 S/D
Dimension tolerance	$\pm 0.1\text{mm}$
Beam deviation	$< 3$ arcmin
Wavefront distortion	$\lambda/4@632.8\text{nm}$
Damage threshold	$> 200\text{MW/cm}^2$
Coating	Single layer MgF2
Mount	Black anodized aluminium



## Standard Products

Part No.	Material	Angle field	$\Phi_a$ (mm)	$\Phi_d$ (mm)	L (mm)	Unit price
HTPS0108	Calcite	$14^\circ \sim 16^\circ$	8.0	25.4	28.0	\$268.0
HTPS0110	Calcite	$14^\circ \sim 16^\circ$	10.0	25.4	33.0	\$318.0
HTPS0112	Calcite	$14^\circ \sim 16^\circ$	12.7	25.4	40.0	\$360.0
HTPS0115	Calcite	$14^\circ \sim 16^\circ$	15.0	30.0	45.5	\$428.0