

Zero Order Waveplate

Features

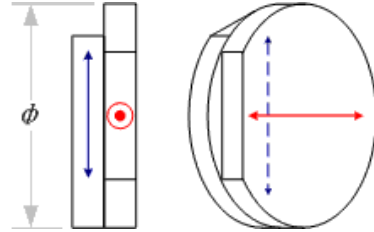
- High Precision Phase Retardation
- Better Temperature Bandwidth
- High Damage Threshold
- Large Size Available

Applications

- Projection Optics System
- Imaging Optics System
- Laser Measurement System
- Optical Instrument

Specifications

Material	Crystal quartz
Dimension tolerance	+0.0/-0.2mm
Retardation tolerance	$<\lambda/500$
Parallelism	<1 arcsec.
Surface quality	20-10 S/D
Wavefront distortion	$\lambda/8@632.8\text{nm}$
Clear aperture	$>90\%$
Coating	$R<0.2\%@\text{central wavelength}$
Wavelength range	200~2200nm

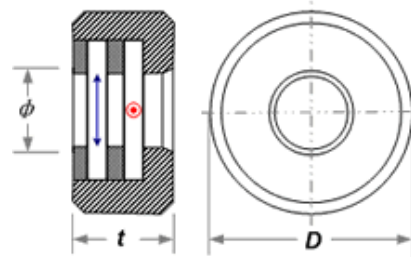


Standard Products

$\lambda/2$ Part No.	$\lambda/4$ Part No.	Diameter(mm)	Unit price	Type
HWPZ0210	HWPZ0410	10.0	\$90.0	Cemented
HWPZ0212	HWPZ0412	12.7	\$100.0	Cemented
HWPZ0215	HWPZ0415	15.0	\$112.0	Cemented
HWPZ0220	HWPZ0420	20.0	\$128.0	Cemented
HWPZ0225	HWPZ0425	25.4	\$148.0	Cemented
HWPZ0230	HWPZ0430	30.0	\$180.0	Cemented
HWPZ1210	HWPZ1410	10.0	\$110.0	Optically contacted
HWPZ1212	HWPZ1412	12.7	\$120.0	Optically contacted
HWPZ1215	HWPZ1415	15.0	\$132.0	Optically contacted
HWPZ1220	HWPZ1420	20.0	\$148.0	Optically contacted
HWPZ1225	HWPZ1425	25.4	\$170.0	Optically contacted
HWPZ1230	HWPZ1430	30.0	\$218.0	Optically contacted

Air-spaced Zero Order Waveplate

- Double Retardation Plates
- Broad Spectral Bandwidth
- Wide Temperature Bandwidth
- High Damage Threshold
- AR Coated and Mounted



Specifications

Waveplate

Material	Crystal quartz
Dimension tolerance	+0.0/-0.2mm
Retardation tolerance	< $\lambda/500$
Parallelism	<1 arcsec.
Surface quality	20-10 S/D
Wavefront distortion	$\lambda/8@632.8\text{nm}$
Clear aperture	>90%
Coating	R<0.2%@central wavelength
Wavelength range	200~2200nm

Standard Products

$\lambda/2$ Part No.	$\lambda/4$ Part No.	D (mm)	Aperture (mm)	t (mm)	Unit price
HWPZ210	HWPZ410	25.4	10.0	8.0	\$113.5
HWPZ212	HWPZ412	25.4	12.7	8.0	\$126.5
HWPZ215	HWPZ415	25.4	15.0	8.0	\$137.5
HWPZ220	HWPZ420	30.0	20.0	8.0	\$172.0
HWPZ225	HWPZ425	30.0	25.4	8.0	\$188.0